

NEEDLE SIZE

NEEDLE QUALITY



K2 (0,055mm)
K2G (0,055mm)
K2I (0,055mm)

F2 (0.002")
F2G (0.002")
F2I (0.002")

K3 (0,075mm)
K3G (0,075mm)
K3I (0,075mm)

F3 (0.003")
F3G (0.003")
F3I (0.003")

K4 (0,10mm)
K4G (0,10mm)
K4I (0,10mm)

F4 (0.004")
F4G (0.004")
F4I (0.004")

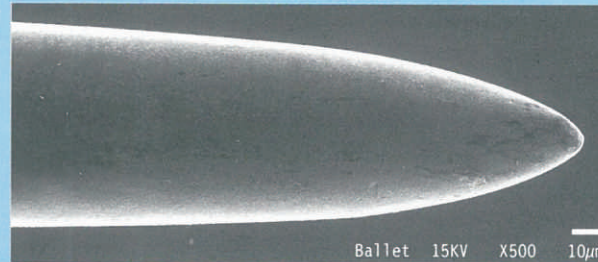
K5 (0,125mm)
K5G (0,125mm)
K5I (0,125mm)

F5 (0.005")
F5G (0.005")
F5I (0.005")

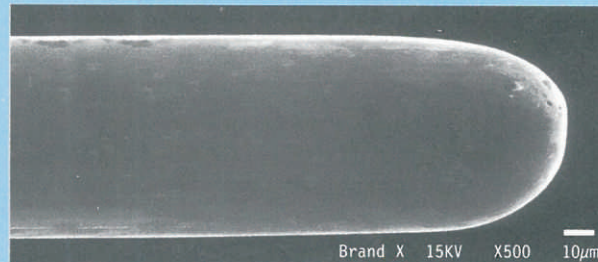
K6 (0,150mm)
K6G (0,150mm)
K6I (0,150mm)

F6 (0.006")
F6G (0.006")
F6I (0.006")

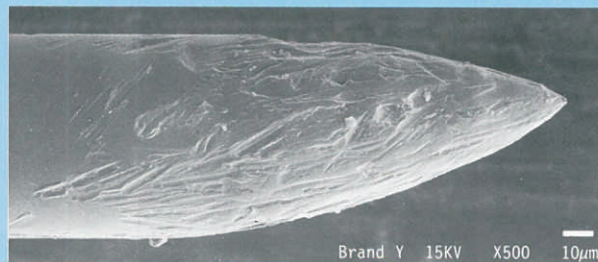
The Ballet® needle is manufactured with both a precise point and mirror-like surface polish. The rounded tapered point of the needle will assist the electrologist in locating the follicle opening, and upon insertion the needle will slide smoothly and accurately to the base of the follicle.



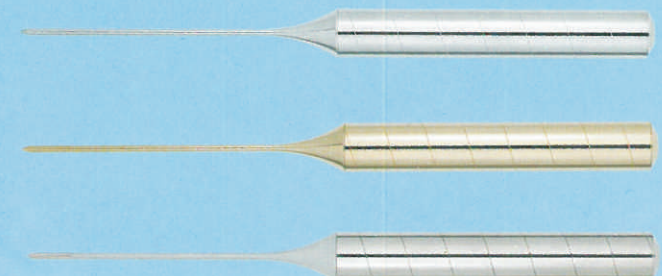
Many other needles on the market have tips that are excessively blunt (photo of Brand "X" below) which can make it difficult to find the opening of the follicle.



Often other brands have burrs and abrasions (photo of Brand "Y" below) that may cause discomfort to the client during insertions and give the electrologist difficulty in feeling the follicle's wall and base.



THE BALLET RANGE





STAINLESS STEEL

The Ballet **stainless steel** needle is the most economical needle in the Ballet range. It is sculpted from 18/8 nickel-chrome Swedish stainless steel - the steel used in fine surgical instruments.

Micro-polishing is used to achieve Ballet's unique, rounded point. Current intensity can be lowered and insertions are smooth, precise and comfortable.

TREATMENT RECOMMENDATION:

The **stainless steel** needle is ideal for clients with strong, healthy skin who respond well to electrolysis treatments.

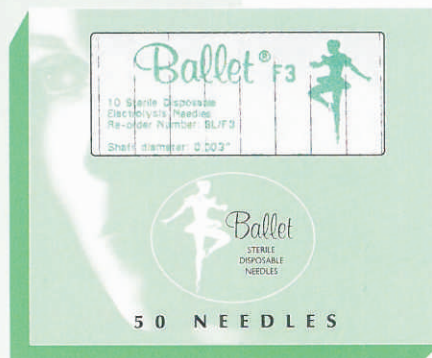
SIZES AVAILABLE:

"F" shank (1.25mm):

.002" .003" .004" .005" .006"

"K" shank (0.80mm):

.002" .003" .004" .005" .006"



GOLD

The Ballet **gold** needle is plated with nickel-free, 24 carat gold. Gold has many acknowledged medical uses from acupuncture needles to ear piercing posts, and its benefits are clear in electrolysis.

Redness and swelling are reduced and the skin rapidly returns to normal after even the most delicate treatments, particularly red vein and skin tag work.

TREATMENT RECOMMENDATION:

The 24ct **gold** needle responds to the needs of clients who suffer from allergies and sensitive skin and whose skin reacts negatively to standard stainless steel probes.

SIZES AVAILABLE:

"F" shank (1.25mm):

.002" .003" .004" .005" .006"

"K" shank (0.80mm):

.002" .003" .004" .005" .006"



INSULATED

The Ballet **insulated** needle is coated with a medical-grade insulation less than one micron thick. This special coating, developed for use on dental prosthetics, allows smooth insertions and stands up to the longest treatments.

Security from over-treatment is excellent. The sensitive surface layers of the skin are protected and important reductions of discomfort are possible.

TREATMENT RECOMMENDATION:

The **insulated** needle is suggested for clients with a high sensitivity to the discomfort of electrolysis.

SIZES AVAILABLE:

"F" shank (1.25mm):

.002" .003" .004" .005" .006"

"K" shank (0.80mm):

.002" .003" .004" .005" .006"

